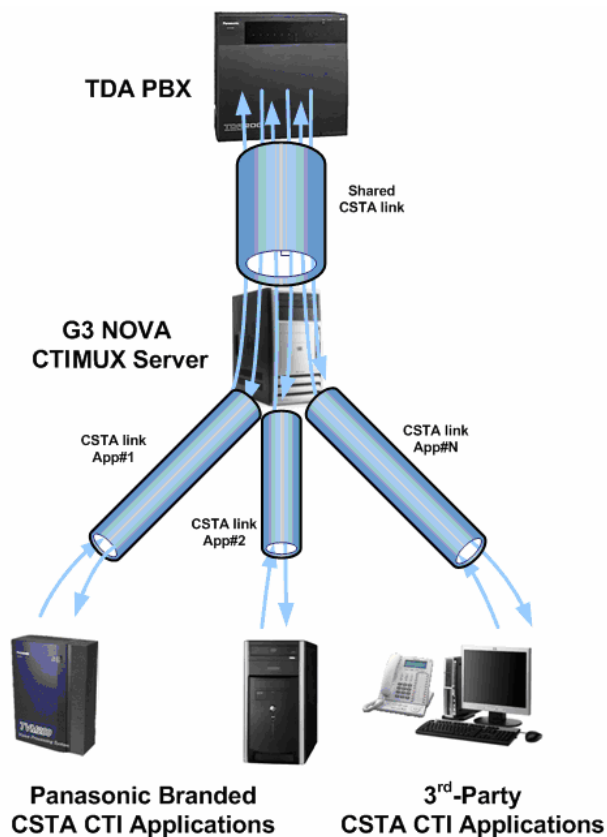


CTIMUX



- CTI MUX is the answer to having more than one CSTA CTI Client applications working on the same PBX
- The CTI MUX does not affect the normal PBX functionality over the CTI link
- Client CTI Applications operate as they would be connected directly to the PBX
- The user of CTI MUX will always know the CTI MUX status and the number of connected CSTA CTI Client applications

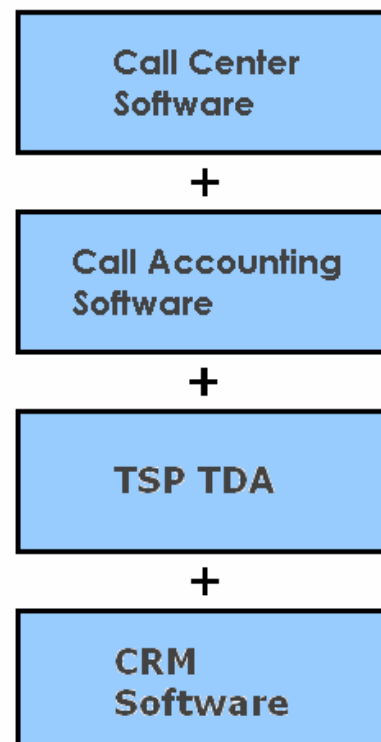
CTI MUX is the new software component designed and developed by G3 NOVA Communications that dispatches the CSTA protocol messages back and forth between multiple CSTA CTI Client Applications and one TDA PBX.

The new software component is designed and implemented as server (CTIMUX Server) having the CTI applications as clients.

Key Features

- Easy to use and simple GUI
- Connects to PBX via IP or USB (USB driver included)
- CTI MUX can run on a separate host or can be installed on the same host with any of the 3rd-party CTI Applications
- CTI MUX does not affect the normal PBX functionality over the CTI link

CTI MUX allows multiple applications to share the same PBX



Target Customers

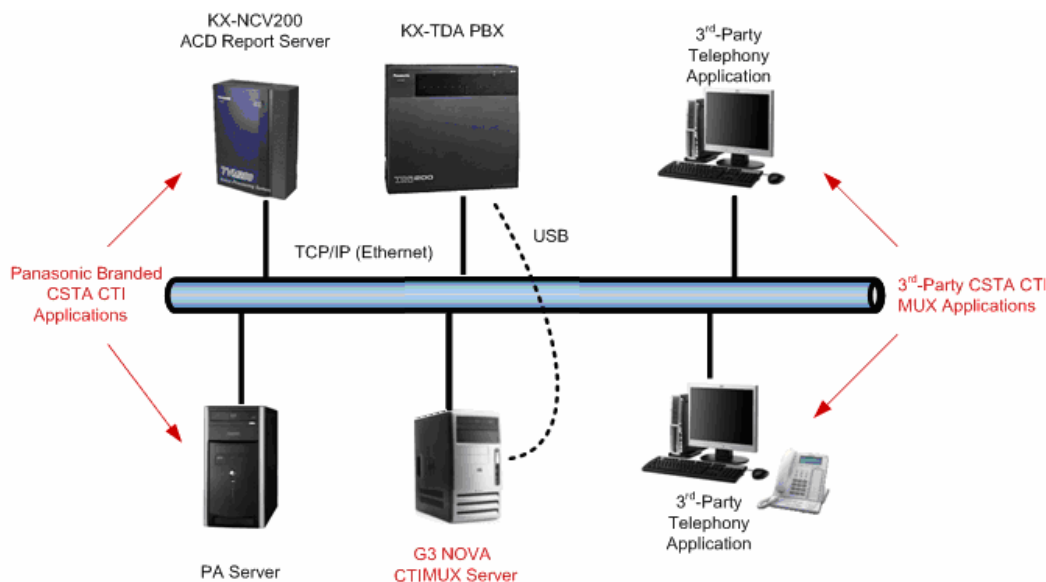
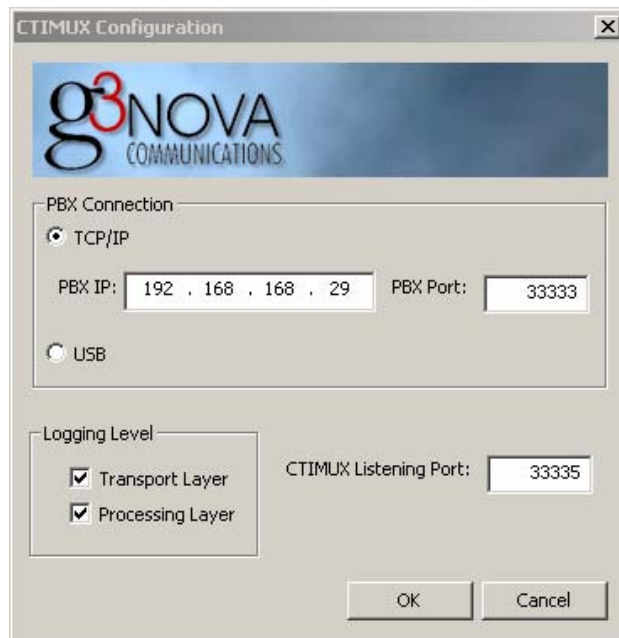
- Any business working with 3rd Party Panasonic branded applications or other applications developed for the Panasonic TDA

System Requirements

- KX TDA 15, 30, 50 (with CSTA MUX USB support), KX-TDA 100, KX-TDA 200 and 600
- Firmware Versions - 3.0000 and up
- Operating Systems:
- Windows 2000 Server and Professional
- Windows 2003 Server
- Windows XP Professional SP1 and SP2

The CTIMUX is developed in portable C so it can be easily ported to Linux.

The CTIMUX is able to run either on a separate host (see the above requirements) or it can be installed on the same host with any of the Panasonic Branded or 3rd-party CTI Application



G3 NOVA Communications SRL

28 Iacob Felix, Sector 1, Bucharest, ROMANIA

US toll free: +1 (877) 239-0356

Sales: sales@g3novacommunications.com, Support: support@g3novacommunications.com