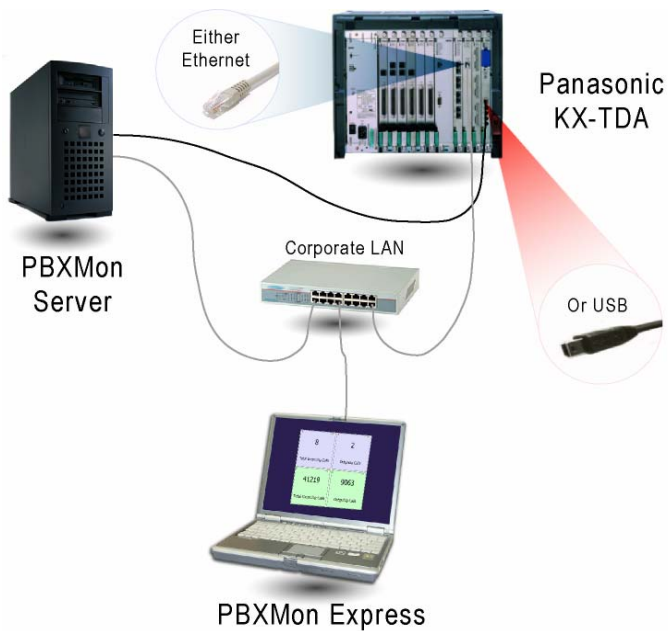


# PBXMon Express



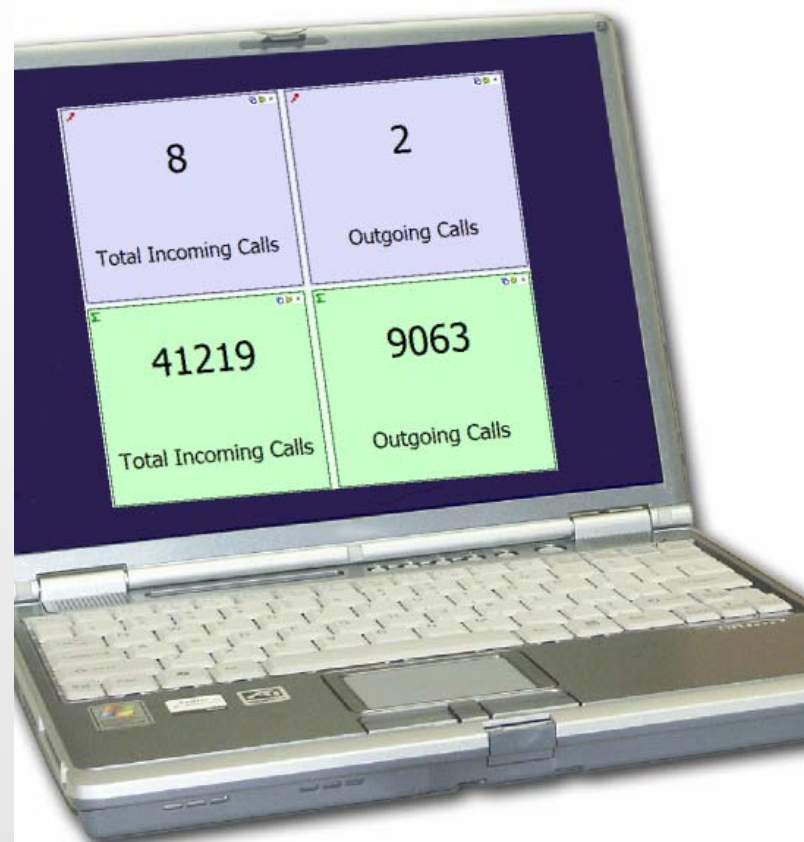
- Affordable and easy to use
- Suggestive representation of PBX status
- All information on a single screen
- Quick isolation of telephony configuration and maintenance issues

PBXMon Express (**PBX Monitor Express**) is a simple monitoring tool for the Panasonic PBX that provides:

- Real-time status of the system
- Real-time extension status

## Key Features

- Straight forward functionality
- Real-time extension status monitoring
- System counters: Active, Cumulative and Peak values
- Real-time counter threshold alarms
- Counters reset scheduler
- Visual status of calls waiting in group queues
- Monitor calls arriving to the extensions



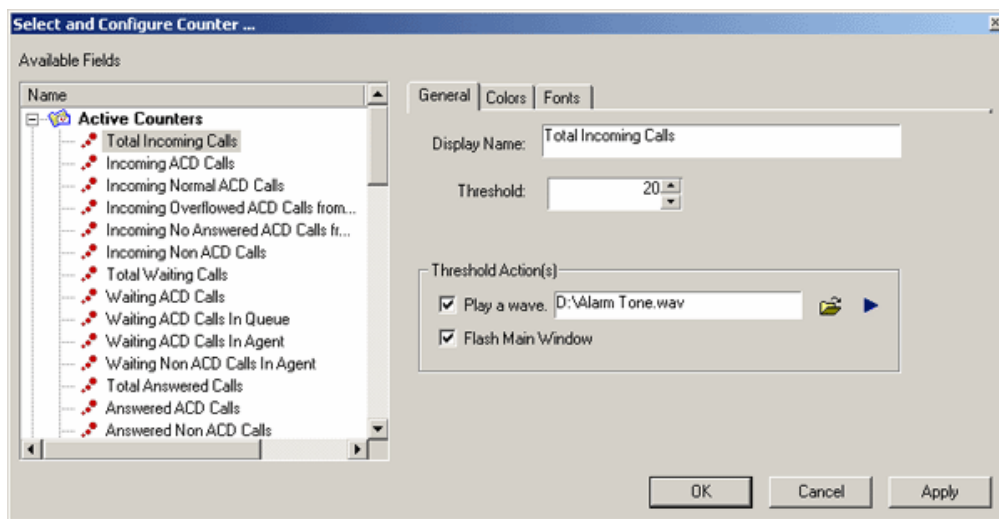
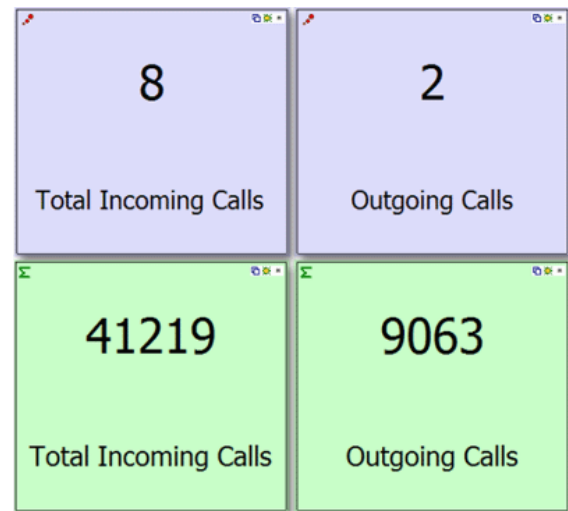
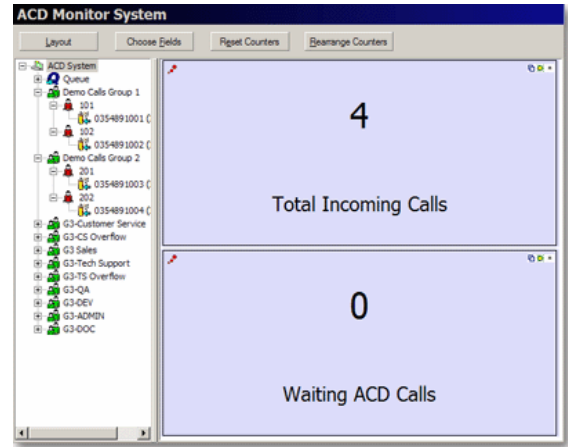
## Target Customers

- Any Dealer technician responsible with telephony solution deployments and maintenance

## System Requirements

PBXMon Express consists of software components that are installed on the users hardware described below:

- **KX-TDA PBX** with Firmware Versions - 2.0080 and up
- **PBXMon Server Host** (minimum) - P4 2 GHz, 512 MB RAM, 2 GB free HDD space
- **PBXMon Express Host** (minimum) – P3 500 MHz, 256 MB RAM, 400 MB free HDD space
- **Microsoft Windows** 2000 Professional (Service Pack 4 and later), Windows XP Professional (Service Pack 1 or Service Pack 2), Microsoft Win2003 Server (Service Pack 1 and Service Pack 4) Domain Controller and Workgroup



## G3 NOVA Communications SRL

28 Iacob Felix, Sector 1, Bucharest, ROMANIA

US toll free: +1 (877) 239-0356

Sales: [sales@g3novacommunications.com](mailto:sales@g3novacommunications.com), Support: [support@g3novacommunications.com](mailto:support@g3novacommunications.com)